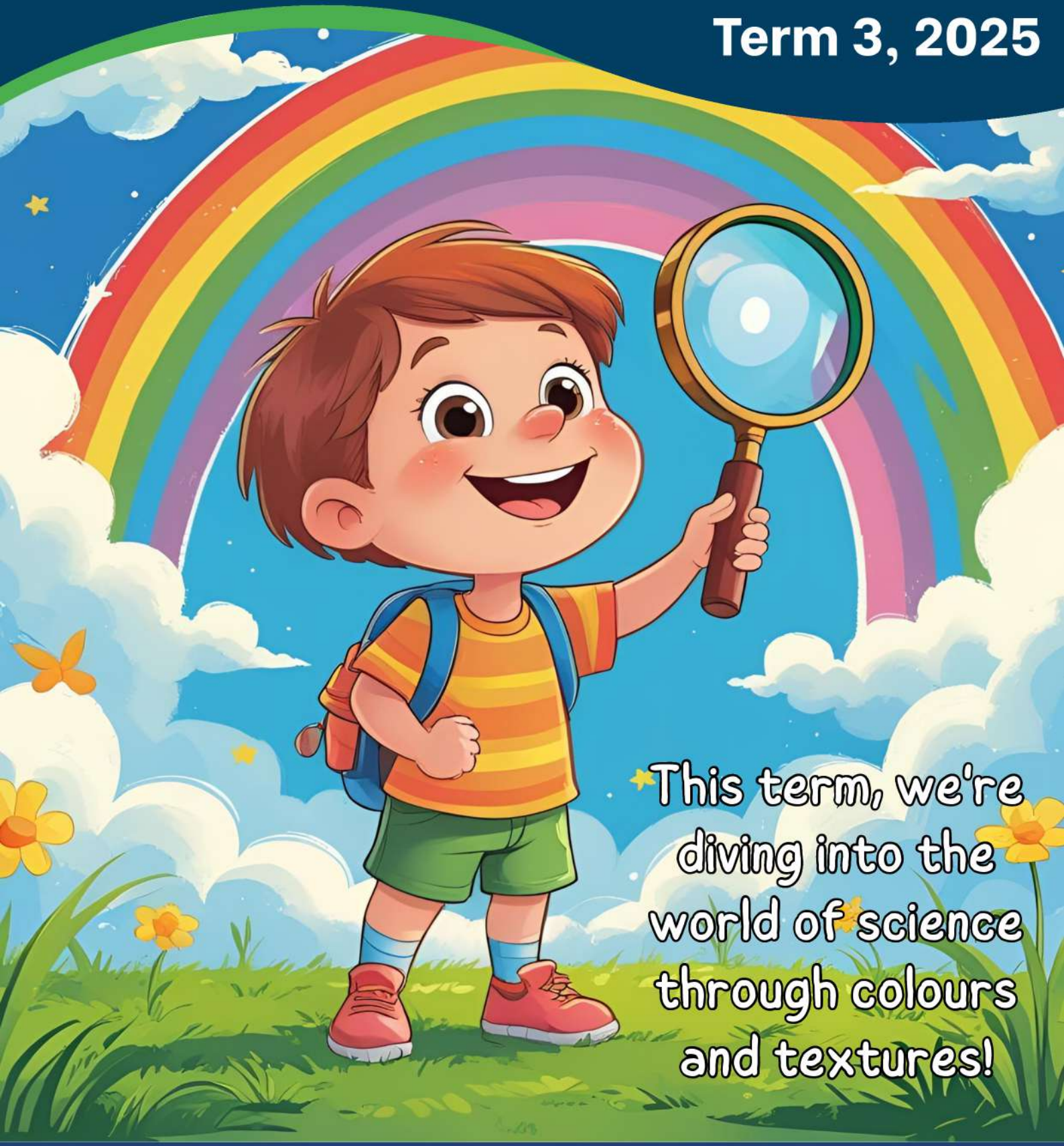


ECE Newsletter

Term 3, 2025



★ This term, we're diving into the world of science through colours and textures!

TARARUA REAP
Rural Education Activities Programme

📍 15 Gordon Street, Dannevirke
☎ 06 374 6565
✉ office@tararuareap.co.nz
🌐 www.tararuareap.co.nz





Mel Oliver

Education Support Coordinator

Kia ora koutou e hoa mā!

What a fun Term 2 we had! Our playgroups and Kōhanga had a great time exploring Road Safety. Together, we learned the important steps of Stop, Look, Listen, and Think, and practised crossing the road while holding a big person's hand. A catchy waiata with fun actions helped make the learning even more memorable!

To wrap up the term, we were lucky to have Max (our local School Community Officer) and Little Buds join us for a special group road safety session. Max brought along her police car, which the tamariki loved sitting in! Little Buds shared helpful information and giveaways about car seat safety. The hall was a hive of activity, filled with ride-on toy police bikes and cars – so much excitement for everyone!

In Term 3, our focus will shift to “Contribution and Exploration”. We’ll dive into science-based activities featuring colour and texture. I look forward to reading *Blue Chameleon* with you, exploring our light table resources, heuristic play, puzzles, music, and a fun craft activity.

We love hearing your feedback – let us know how you’re finding the sessions and any topics you’d like to see in future playgroups. Looking forward to a bright and colourful Term 3 with you all!

Ka kite ano,

A handwritten signature in black ink that reads "Mel".

Exploring Science

TERM THREE 2025 – DELIVERED BY MEL OLIVER



This term, our focus is on science using colours and textures!

This includes a storybook, music, puzzles, a light table, heuristic play and a craft activity.

Play Groups	Day	Date
Ruahine Playgroup	Tuesday	15 July
Building Blocks Dannevirke	Thursday	17 July
Te Kōhanga Reo o Kaitoki	Wednesday	23 July
Sprouts	Tuesday	29 July
Te Whare Koha Playgroup	Wednesday	30 July
Tots and Toddlers	Monday	4 August
Ti Tree Point Playgroup	Wednesday	6 August
Woodville Playcentre	Tuesday	12 August
Building Blocks Woodville	Thursday	14 August
Takapau Playcentre	Wednesday	20 August
Kumeroa-Hopelands Playgroup	Monday	25 August
Te Kōhanga Reo o Atawhai	Tuesday	9 September

TE WHARIKI STRAND

Mana Tangata
Contribution

Mana Aotūroa
Exploration

GOAL

Learning for all irrespective
of ability, age or
background.

Children's play is valued as
meaningful learning.

LEARNING OUTCOME

Use a range of skills to play and
learn with others. Treat each
other fairly.

Spontaneous play is identified
as learning through imagining
and experimenting.

TARARUA REAP

Rural Education Activities Programme



15 Gordon Street, Dannevirke



06 374 6565



mel@tararuareap.co.nz



www.tararuareap.co.nz



Waiata - The Colour Song



Mā is White



Whero is Red



Kākāriki Green



Pango is Black



Mangu is too



A - E - I - O - U



Kōwhai Yellow



Parauri Brown



Kahurangi Blue



Karaka is
our Orange



A - E - I - O - U



Sorting Colours



Pom Pom Colour Sort

Have your child sort coloured pom poms, either into coloured bowls or onto coloured paper. Improve their fine motor skills and increase the challenge by having them use tongs or pegs to sort.



Colour Matching

Using the tube from an empty paper towel roll, draw coloured dots to match a sheet of stickers on the tube (if there are 6 stickers of each colour on the sheet, draw 6 dots in colours to match). Have your child match the stickers to the dots. Easy Fun!!



This is a great quiet activity to take out and about to cafes, waiting rooms etc.



Sorting Cube

Take colour matching to the next level with a sorting cube! Cover a small box with coloured paper on each side to match a sheet of stickers. Your child can pick a sticker and turn the cube to match the colour, or throw the cube like a dice, then find the matching sticker!

What looks like a straightforward skill is actually incredibly complex in early childhood. When a child is *sorting*, they are categorising information, organising data, and judging attributes. These activities are also great for their fine motor skills and learning colours!



COLOURS IN NATURE SCAVENGER HUNT

Go for a walk and find each of
these colours in nature.
Can you find them all? Good Luck!

Yellow

Red

Grey

Light
Blue

Dark
Blue

Purple

Dark
Green

White

Orange

Brown

Light
Green

Pink

Black

RAPURAPU TĪWHIRI I ROTO I TE TAIAO



KIDS
GREENING
TAUPO

Kimihia ēnei tae katoa i roto i te taiao.
Ka kitea e koe te katoa? Kia Kaha!

Whero

Karaka

Kōwhai

Mā

Kikorangi

Kākāriki

Māwhero

Kikorangi

Pango

Kiwikiwi

Parauri

Waiporoporo



Kākāriki

www.kidsgreeningtaupo.org.nz

Science and nature

Pūtaiao



Children are engaged in science whenever they are learning about the world around them. This sort of play allows children to develop a perception of themselves as 'explorers' – competent, confident learners who ask questions and make discoveries.

Science and nature

Pūtaiao

Te Whāriki

Science and nature play supports learning across all strands of Te Whāriki. In particular, it supports the **Exploration strand**, where children learn strategies for active exploration, thinking and reasoning and develop working theories for making sense of the natural, social, physical and material worlds.



Science and nature can help children to

- learn to question and investigate
- think and act
- discover how nature works
- learn the correct names for animals, plants and nature
- care for the well-being of others, including plants.



Adults can support children by

- nurturing their sense of exploration and curiosity
- creating an environment that promotes observation, exploration and explanation
- asking questions e.g. What do you think might happen? Why do you think that happened? What do you see happening?
- inviting them to describe what they see
- supporting them to touch, taste, listen, see and smell the items
- encouraging them to come up with their own explanations.

Providing for science and nature

Provide a low display table so children can touch, feel and smell the items. Provide a range of items and perhaps try to include a different item each day. Science learning also involves activities such as preparing and cooking food, caring for plants and animals, playing with water and ice, recycling and caring for the environment, or even taking apart old equipment to see how things work inside.

Ideas for equipment:

- non-poisonous plants, flowers, leaves and vegetables
- bones, fur and feathers
- glass, metal and plastic items
- information about nature, animals, electricity and other sciences
- rocks, stones and shells
- magnifying glasses, magnets and books.





Budget Mentoring

RELIEVE FAMILY STRESS AND GET ON TRACK
WITH YOUR FINANCES



Parenting can be hard, even without the stress of juggling debts and bills.

Our Financial Mentors provide tips, tricks and resources to help sort your financial situation. They can help you establish realistic financial goals for you and your family.

- ✓ Free
- ✓ Non-Judgemental
- ✓ Confidential

“The help I received has helped relieve stress and is giving me peace of mind.”

Details



Bookings by
appointment



Tararua REAP,
15 Gordon Street



Fully Subsidised

**For more information or
to book an appointment,
contact Tararua REAP**

TARARUA REAP
Rural Education Activities Programme



15 Gordon Street, Dannevirke



06 374 6565



office@tararuareap.co.nz



www.tararuareap.co.nz





ALL YOU NEED TO KNOW ABOUT WILLS



**Married? Started a family?
Bought a house? Planning an OE?**

Big life changes call for big decisions – like making a Will!

Join this workshop to learn:

- What a Will is and why you should have one
- How to make a Will and what to include
- Key people to consider

Gain peace of mind and finally tick this off your “Adulthood” list. It’s easier than you think – and more important than you realise.

Details

- 🕒 10.00 am – 12.00 pm
- 📅 Wednesday 27 August
- 📍 Tararua REAP
15 Gordon Street
- 💰 Donation Appreciated



**MANAWATŪ
COMMUNITY LAW
CENTRE**

Te Whare Ture Hapori o Manawātū

**Contact Tararua REAP to register, or visit
www.tararuareap.co.nz**

TARARUA REAP
Rural Education Activities Programme

- 📍 15 Gordon Street, Dannevirke
- ☎ 06 374 6565
- ✉ office@tararuareap.co.nz
- 🌐 www.tararuareap.co.nz





Has your child had their first dental check?

Dannevirke Dental Services

MidCentral District Health Board's Child and Adolescent Oral Health Service provides support, advice and FREE dental treatment for children aged from 0-13 years. FREE dental treatment is available at both private dental practices in Dannevirke from 13-17 years (up until 18th birthday).

Contact Details

Dannevirke South School Phone: 06 374 7361

Huia Range School Phone: 06 374 7672

Freephone: 0800 TALK TEETH or 0800 825 583

Email: childoralhealth@midcentraldhb.govt.nz



Diverse by Design

This is a space for whānau to learn, share, and support each other in understanding and celebrating **NEURODIVERSITY**, supporting our children who experience the world differently.

We plan to meet fortnightly, with the format shaped by the group's needs. Our first meeting is **Thursday 7 August at 12.30pm**.

Our local Autism New Zealand Outreach Coordinator, Rebecca Chilton, will join us monthly and will be at this first session.

Come along and help shape how this group can work for us all. We'd love to hear your ideas!

For more information contact Caroline:

 06 374 6565  caroline@tararuareap.co.nz

TARARUA REAP
Rural Education Activities Programme

